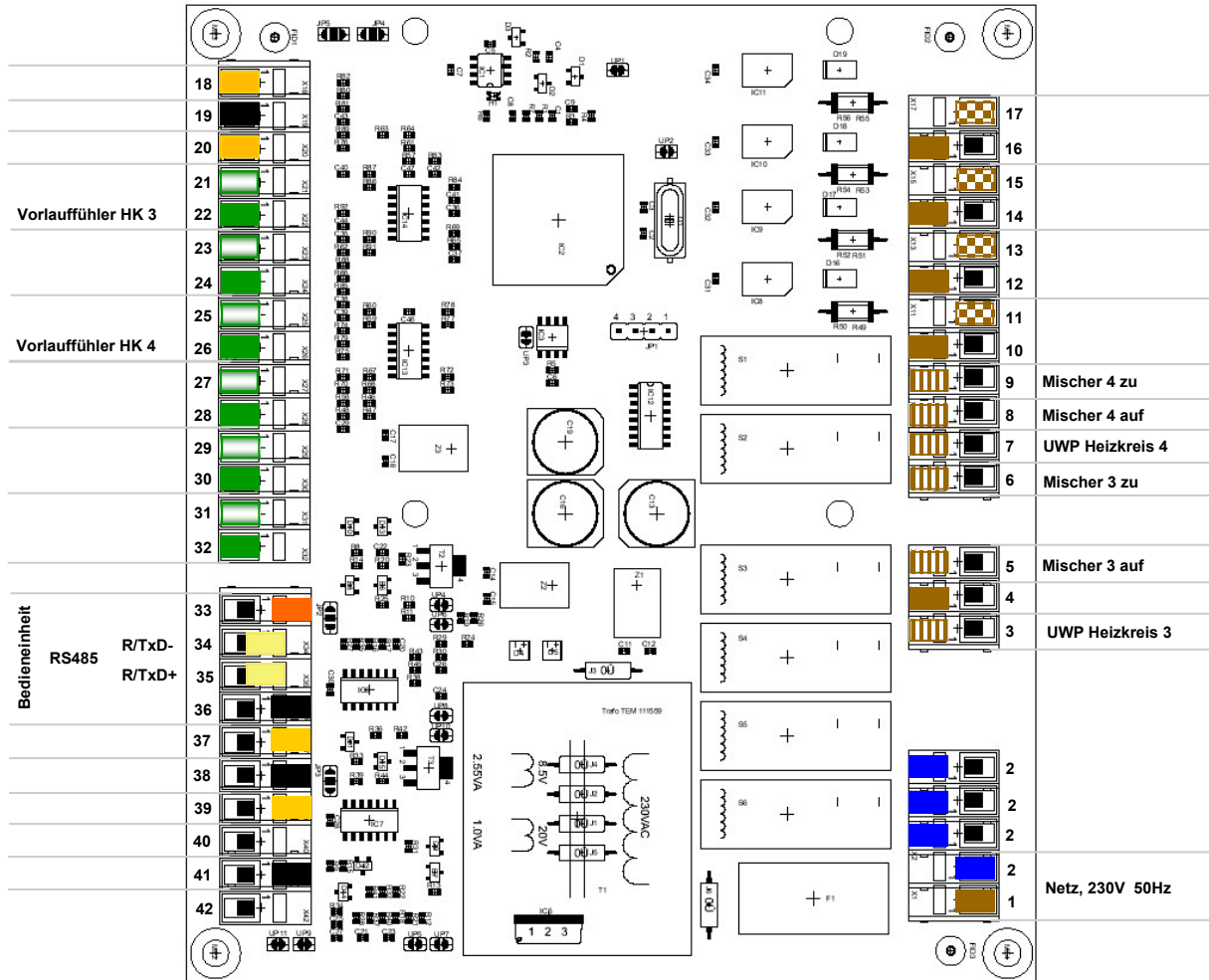











W380 mit W372 ab SW 707.0
Zusatz-Heizkreise



Legende:

- | | | | |
|---|---|--|-----------------------|
|  | L (230V 50Hz fixe Phase) |  | 5 VDC (Ausgang) |
|  | N |  | GND |
|  | 230V 50Hz Schaltausgang (max. 2A/Ausg., total max. 4A alle Ausg.) |  | Signal (RS 485) |
|  | |  | PT 1000 Fühlereingang |
| | |  | PT 1000 Fühler GND |